



Report Generator Tool

- 1. Introduction 2
- 2. Getting Started 2
 - 2.1 Setting Report Generator 3
 - 2.2 Setting Report Criteria 5
 - 2.2.1 Setting up E-mail 7
- 3. Playback 9
 - 3.1 Playing back Recordings 9




1. Introduction

Report Generator is a useful utility that allows users to generate daily and/or weekly reports, in MDB or HTML format, for the system log of GV-DVR / NVR / VMS without requiring additional installation. These reports can be generated automatically by a schedule to be saved on the PC and/or sent to the e-mail address specified. If the reports include records of events with recordings, users can also play back these recordings remotely via Internet connection.

Note: To record motion and/or I/O events to System Log to be included to the Report, it is required to enable related settings before starting monitoring. For motion events, select **Register Motion Event** in Advance Motion Detection Setup dialog box (Figure 1-10 in *GV-VMS User's Manual*). For I/O events, select **Register Input Event** in I/O Application Setting dialog box (Figure 6-10 in *GV-VMS User's Manual*).

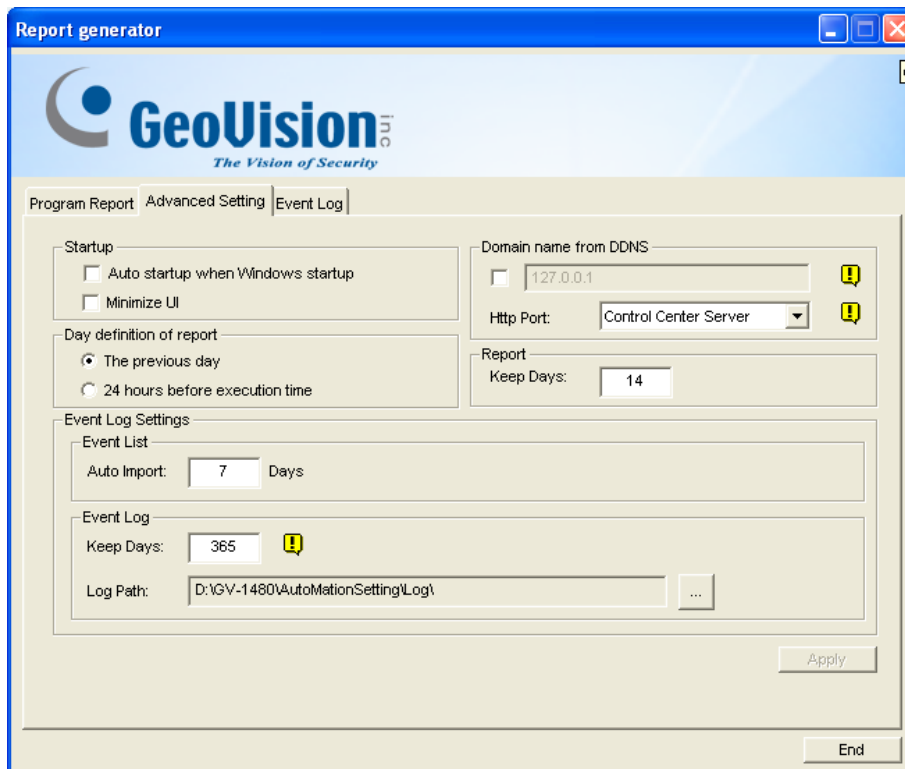
2. Getting Started

1. To start, open the GV-DVR / NVR / VMS directory (example = C:\GV-VMS) and double-click **ReportGenerator.exe**. The program is automatically minimized to the system tray.
2. Click on the  icon and select **Edit program report**. The main window of Report Generator appears.



2.1 Setting Report Generator

In the Report Generator dialog box, click the **Advanced Setting** tab.






[Startup]

- **Auto startup when Windows startup:** Automatically starts Report Generator upon Windows startup.
- **Minimize UI:** Minimizes the Report Generator after it is started.

[Day Definition of Report] Define the time period of data to be included within the report.

- **The previous day:** The report generated is based on the data of the previous day.
- **24 hours before execution time:** The report generated is based on the data from the 24 hours immediately before generating the report.

[Domain name from DDNS] Generates URL links in the HTML reports exported for remote video playback. For this function to work, type the IP address or domain name of the GV-DVR / NVR / VMS, and enable its **Remote ViewLog Service** on the GV-VMS (**Home**  > **Toolbar**  > **Network**  > **Control Center Service**) or GV-DVR / NVR (**Network** > **WebCam Server**, with **Run ViewLog Sever** enabled).

For details on setting the domain name and remote playback, see *Dynamic DNS*, Chapter 9, *GV-VMS User's Manual*, and *3.1 Playing Back Recordings* later in this guide, respectively.



[Report]

- **Keep Days:** For reports saved to the PC, specifies the number of days the reports are kept for, up to 30 days.

[Event Log Settings] The following settings configure for logs created under the **Event Log** tab on the main screen of Report Generator.

- **Auto Import:** Specifies the number of days of the Report Generator logs displayed under the **Event Log** tab, for up to 7 days.
- **Keep Days:** Specifies the number of days the Report Generator logs are kept for, for up to 365 days.
- **Log Path:** Specifies the directory in which the Report Generator logs are saved at.



2.2 Setting Report Criteria

Users can use Report Generator to generate up to 300 reports. To do this, follow the steps below:

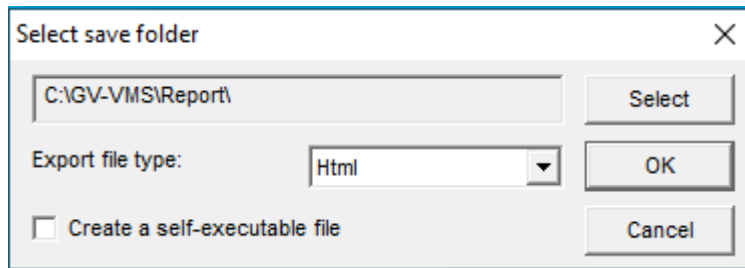
1. On the Report Generator, click the **Program Report** tab.



2. Type a desired name for the report next to **Job**.
3. Select the type(s) of events you want to include in the report under **System MDB**, from *Monitoring*, *System*, *Login* and *Counter*. To set up specific criteria, click **Filter** next to the type(s) of events selected.
 - ⊙ **Monitor:** Includes motion detection and I/O events.
 - ⊙ **System:** Includes system configuration events.
 - ⊙ **Login:** Includes GV-DVR / NVR / VMS and WebCam Server login and logout events.
 - ⊙ **Counter:** Includes the events of and results of GV-DVR / NVR / VMS's counter function.
4. Optionally select the desired camera channel(s) under **POS MDB** to record any POS events of the channel(s) selected.
5. Under **Action Select**, select where the reports are generated to.



- ⊙ **Save to HD:** Saves the reports generated on the PC. Click **Setting**. This dialog box appears.



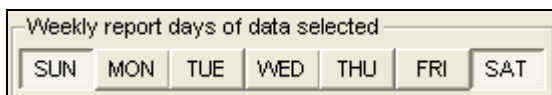
Click **Select** to specify the storage directory and select *html* or *MDB* as the file format from **Export file type**. Optionally select **Create a self-executable file** for the file to be accessible without an additional program.

- ⊙ **E-Mail:** Sends the reports generated to the e-mail address specified as attachments. Click **Setting** to set up the e-mail account and file format of the attachments sent, see *2.2.1 Setting up E-mail*.

6. In **Execution Method**, choose the time in which the reports are generated.

- ⊙ **Everyday:** Automatically generates daily reports of the time specified within **Select Time**.
- ⊙ **Sun - Sat:** Automatically generates weekly reports on the day of the week selected and at the time specified within **Select Time**.

For weekly reports, select the data of the days of the week to be included within the report.



- ⊙ **Manual daily:** If **The previous day** is selected under Day Definition of Report in Advanced Setting (*2.1 Setting Report Generator*), the report generated will include the data of the day before the **Select Date**. If **24 hours before execution time** is selected under Day Definition of Report in Advanced Setting (*2.1 Setting Report Generator*), the report generated will include the data of the 24 hours immediately before the **Select Time** and **Date**.



- ⊙ **Manual Weekly:** If **The previous day** is selected under Day Definition of Report in Advanced Setting (2.1 Setting Report Generator), the report generated will include the data of the 7 days before the **Select Date**. If **24 hours before execution time** is selected under Day Definition of Report in Advanced Setting (2.1 Setting Report Generator), the report generated will include the data of the 7x24 hours immediately before the **Select Time and Date**.

For weekly reports, select the data of the days of the week to be included within the report.

2.2.1 Setting up E-mail

To set up e-mail settings for sending reports generated as attachments to the e-mail address specified, follow the steps below:

1. On the Report Generator, click the **Program Report** tab, select **E-mail** and click **Setting**. This dialog box appears.



2. Under **Mail Setup**, type the name of your outgoing mail server (SMTP), the sender's e-mail address, recipients' e-mail addresses, separated by a semicolon, a subject and content for the e-mails to be sent.
3. Modify the default **SMTP Port** of 25 only if necessary.
4. Select **SSL** if it is required by your e-mail server for authentication
5. Optionally click **Test Mail Account** to send a test e-mail, from the sender to the recipients.
6. Under **Attach File Select**, select *html* or *MDB* from **Export file type** as the file format for the reports generated and attached, and optionally select **Create a self-executable file** for the file to be accessible without an additional program.
7. Optionally select **Attach File Limit** to set a size limit for the reports to be attached, from 1 ~ 10 MB.
 - ⊙ Select one of the options for when the report to be attached exceeds the specified size limit, between **The attached files exceeding the size limit will not be sent** and **The attached files are automatically split and sent out in multiple e-mails (Only .html files can be split)**.
8. Select **SMTP Mail Server requires authentication** if the SMTP mail server requires authentication and type the login **Account** and **Password** for your e-mail.



3. Playback




3.1 Playing back Recordings

For reports generated in html format, the video recordings can be played back with the Remote ViewLog function. Make sure the **Remote ViewLog Service** of the GV-DVR / NVR / VMS is enabled.

1. Open a report and click the video icon next to an event with recording.

Report Information
DVR: TEST96
Action Time: 12/19/2007 8:00:00 AM
Report Type: Daily Report

Monitor-Table
1. [Total 1 pages]

ID	Time	Device	Information	Event	Video
35	2007/12/19 02:02:26	Camera 1		Motion	
36	2007/12/19 02:02:36	Camera 1		Motion	
37	2007/12/19 02:02:42	Camera 1		Motion	

Video icon

2. If the **Domain name from DDNS** in Advanced Setting (2.1 Setting Report Generator) isn't selected, this dialog box appears.

Connect to Remote Viewlog Service

IP Address : 192.168.0.240

Port : 5552

Host Type : DVR / NVR / VMS

ID : 1

Password : *****

Save Password

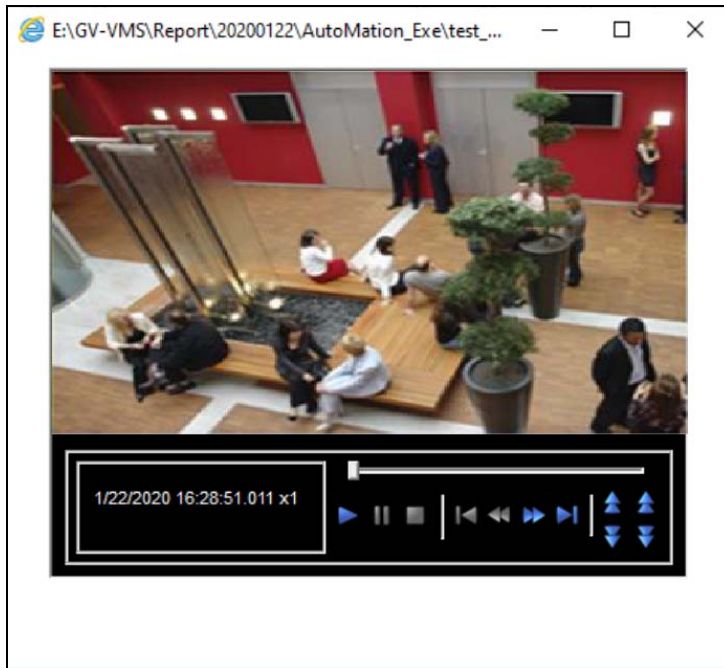
Dual

ID :

Password :



3. Type the IP or domain name, ID and password of the GV-DVR / NVR / VMS, and click **OK** for playback.



4. You can change the play mode and create special effects on the video by right-clicking on the playback window. For details on the playback window, see *Single Player* in Chapter 4, *GV-VMS User's Manual* and *GV-DVR / NVR User's Manual*.